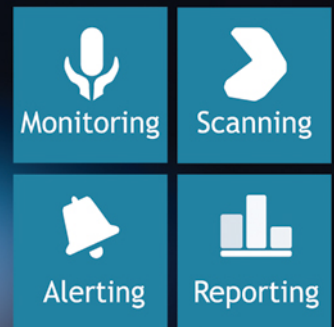


GSX Monitor & Analyzer

Streamline your business-critical messaging & collaboration environments



GSX Monitor & Analyzer

Microsoft Exchange

GSX Monitor & Analyzer is a powerful agentless solution that enables administrators and IT managers to proactively monitor and report on Microsoft Exchange, SharePoint and BlackBerry Enterprise Servers through one simple interface. Managing and reporting work required to meet established availability and performance goals that might be difficult to manage not only from the server level but also from a service perspective.

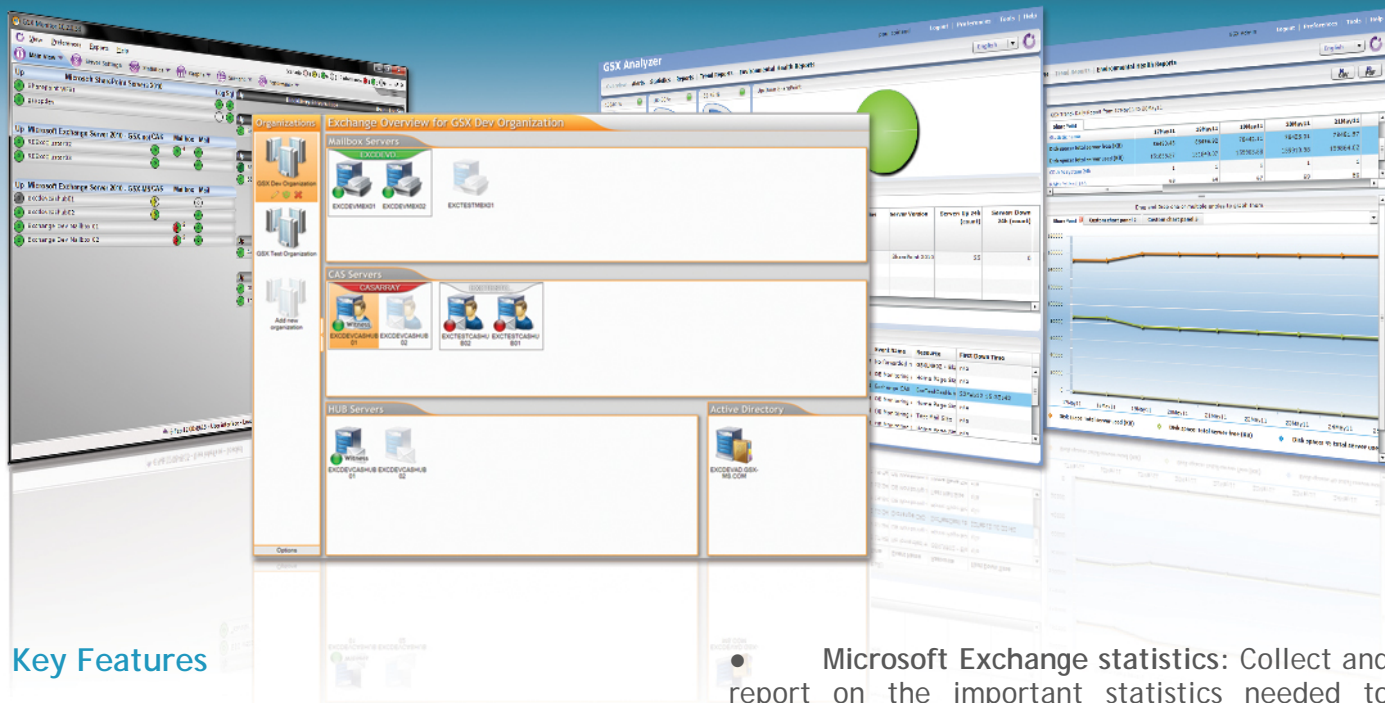
GSX Monitor & Analyzer provides customizable alerts to warn when service levels reach predefined thresholds so that remedial action can be taken before it impacts the line-of-business.

Working in tandem with **GSX Monitor**, **GSX Analyzer** provides extensive analysis and reporting features that enable administrators to automate their reporting and SLA management and to gain valuable insight into the overall health of their infrastructure.

BENEFITS

- Out-of-the-box proactive tool with pre-configured automated reports and alerts
- Monitoring solution to manage and reduce IT overhead
- Collect and report on all critical statistics to prevent future performance and capacity issues
- Ensure continuity and performance - See how your entire Exchange environment is performing

Download a free trial at www.gsx.com



Key Features

- **Powerful consolidated dashboard:** Automated discovery of all Exchange servers in the organization. Display a comprehensive overview of your Exchange servers, arranged by role with availability status.

- **Strong end user scenarios:** Monitor all the critical servers, roles and Web Services for your entire Microsoft Exchange environment. Combine with user simulation to measure the quality of service available for each part of your infrastructure including Web Services, replication and all Windows clustering services.

- **Full integration with global monitoring tools:** Unify your reporting by automatically forwarding critical performance information to your global monitoring console. Capture SNMP traps and display them in your SCOM monitoring window as critical alerts, warning alerts or information alerts.

- **Availability and performance proactive alerts:** Define availability and performance alerts for proactive incident management.

GSX Monitor keeps the business up and running by identifying applications that have performance or availability bottlenecks before they cause major business impacts.

- **Microsoft Exchange statistics:** Collect and report on the important statistics needed to prevent performance and capacity issues.

- **Reporting capabilities:** **GSX Analyzer** is a unique web application that allows simple reporting on your Exchange infrastructure.
 - Compare your mailbox databases across the DAG and your performance statistics across each Exchange role.

- Unique Forecasting features allow the anticipation of future storage or capacity issues within your environment.

- Statistics view: Easily access interesting statistics for each server role. Identify critical information about: server, mailbox database, DAG, CAS, CAS Array and Hub/Edge.

- **Exchange storage management:** Get a real time view of the disk capacity for any of your Exchange servers. Set up alerts when disk space is below your pre-defined Key Performance Indicators (KPI) and troubleshoot any problems that would rely on disk capacity.

- **SLA control and compliance:** Determine and implement the overall levels of acceptable service compliance for Microsoft Exchange applications. Identify those that are out of compliance so that you can assess the management actions that need to be taken.



GSX Solutions

36, Boulevard Helvétique
1207 Geneva, Switzerland
sales@gsx.com

For more information:

For more information on GSX Solutions, visit www.gsx.com, where our resource center contains FAQs, Case Studies, Podcasts, Whitepapers and Webinars.

You can also download a fully functional, 30-day evaluation copy of GSX Monitor, GSX Monitor & Analyzer, GSX Usage Metrics and GSX Server Guard.